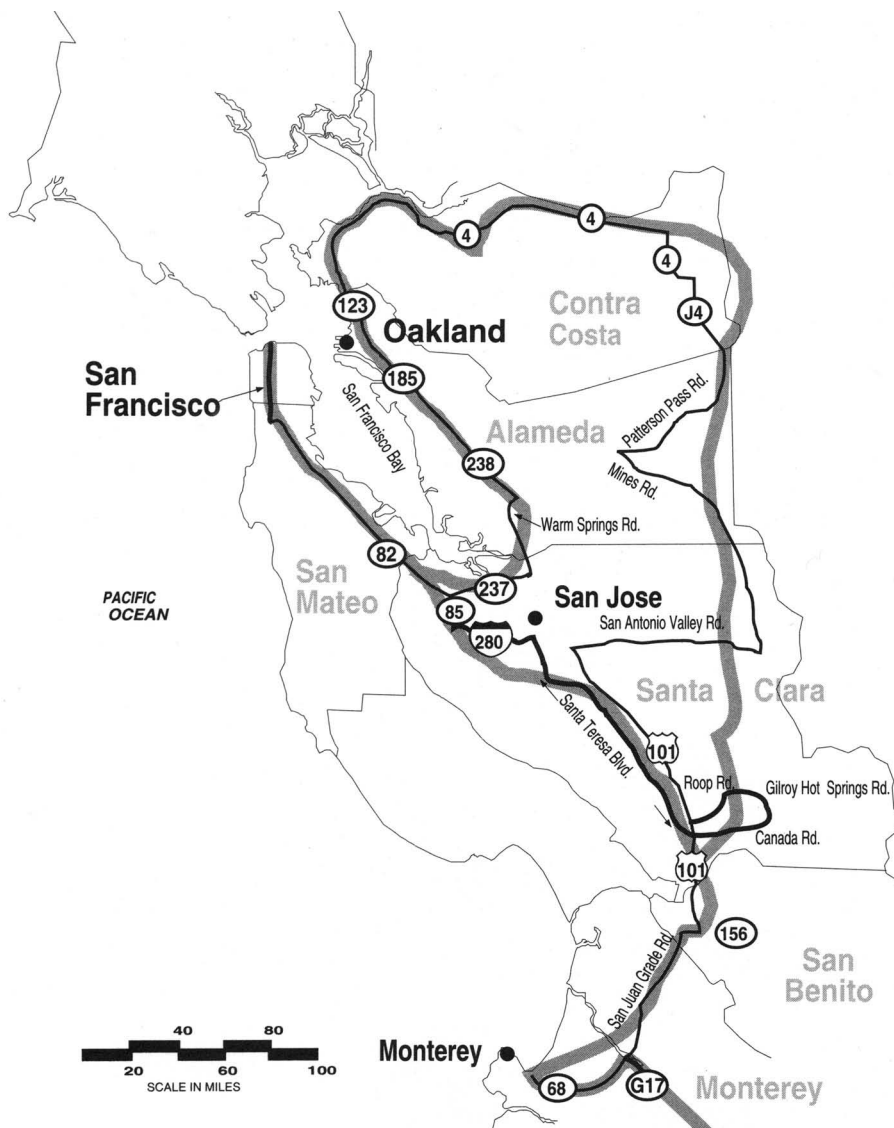
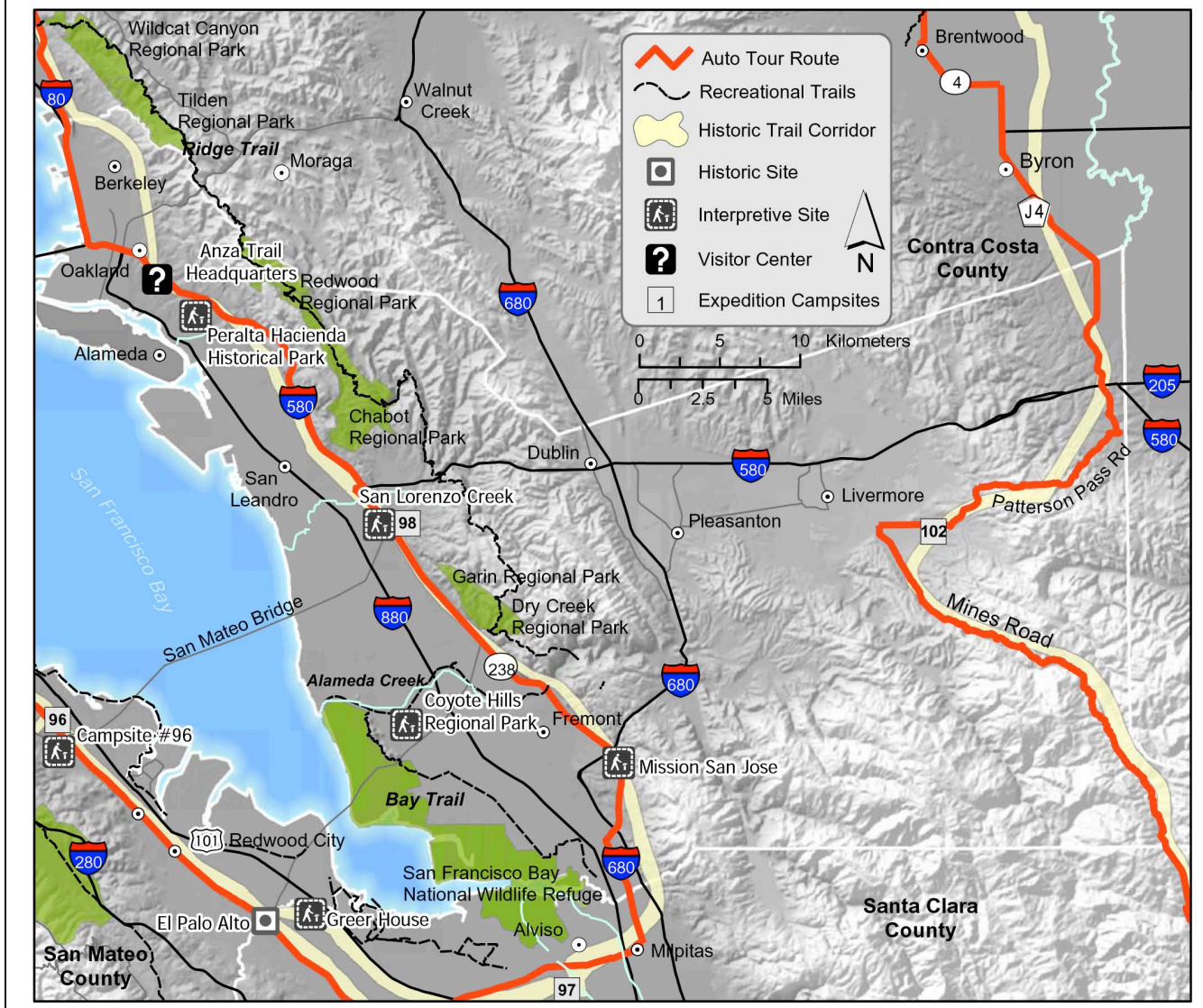


Alameda County - San Lorenzo Creek to the East Bay





Alameda County - San Lorenzo Creek to the East Bay



Driving Directions for Auto Route

Alameda County is between Contra Costa and Santa Clara counties. From Santa Clara, travel north on Warm Springs/North Milpitas Road. At Mission Blvd., turn right onto Mission Blvd./CA 238. In Fremont, stop at Mission San José (43300 Mission Blvd.), or take a hike in Garin Park. In Hayward, take a short detour east on Foothill Blvd. to visit Anza Park (camp #98). Continue north on Mission Blvd./CA 238 to its intersection with I-580 in Castro Valley. Travel northeast on I-580 to Oakland and take the Coolidge exit to visit the Peralta *Hacienda*, or the Lakeshore exit (to 11th St.) to get to the Anza Trail’s administration offices. The Hacienda has interpretive information on the expedition. To continue, head north on I-580/80 past Berkeley towards San Pablo Bay.

Hiking/Biking Ideas

Hikers can visit the Coyote Hills Regional Park (8000 Patterson Ranch Rd.) in Fremont. Nearby, off of Mission Blvd., the East Bay Regional Park District operates a regional trailhead and staging area at Stanford Avenue (37° 30' 19.18" N, 121° 54' 5.78"). The trail connects with the Bay Area Ridge Trail, the area’s recreational route for the Anza Trail. Hikers can overlook the trail from Garin/Dry Creek, Chabot, Redwood, Tilden and Wildcat Regional Parks.



Peralta Hacienda in Oakland Photo: NPS

Other Sites

At Higuera Historical Park, one can view an adobe built by expedition descendant Fulgencio Higuera. The Park is located at 47300 Rancho Higuera Road off of Mission Blvd. at the foot of Mission Peak Regional Park in Fremont. At Anza Park in Hayward, there's a brass plaque commemorating Anza's passage. San Leandro Memorial Park is a good place to rest on your journey. Visit the Oakland Museum of California, at 100 Oak St., with its displays on the natural and cultural history of early California, and the nearby administration offices of the National Park Service Juan Bautista de Anza National Historic Trail at 1111 Jackson St. in Oakland, tel.: 510-817-1438, web: nps.gov/juba/

About Your Visit to Alameda County

After measuring the Palo Alto, and camping in the vicinity of the Guadalupe River at the southern tip of the bay, Font, Anza, Moraga and the exploratory band of soldiers made a sharp "U" turn to ascend into the low hills parallel to the eastern shore of the San Francisco Bay. At many of the creeks along the way, they encountered American Indians of the Chochoeno (Costanoan) tribes. They continued north to San Pablo Bay.

Sites of Interest

A. Don Edwards San Francisco Bay Wildlife Refuge

Anza tried to avoid the marshlands at the southern edge of the bay. Today, the visitor center for the Wildlife Refuge provides exhibits on the salt marsh ecosystem and its inhabitants. It operates an Environmental Education Center in Alviso, and has a segment of the Bay Trail.

B. Mission San José

Founded in 1797 on Ohlone land along the historic Anza route. The museum includes displays about Ohlone and mission life. The grave of Fulgencio Higuera, grandson of expedition member Ignacio Anastacio Higuera is also here. It is located at 43300 Mission Blvd. at Washington Blvd. in Fremont.

C. Alameda Creek

Here, thirty *Chochoeno* natives raised an arm, extending their hand as a sign that the soldiers should stop. Yelling with great rapidity, they said: "Au, au, au, au, au...", and then they halted, vigorously slapping their thighs. In a peaceful encounter, they were given beads. Today, the Alameda Creek Regional Trail connects Coyote Hills Regional Park to the Bay Area Ridge Trail.

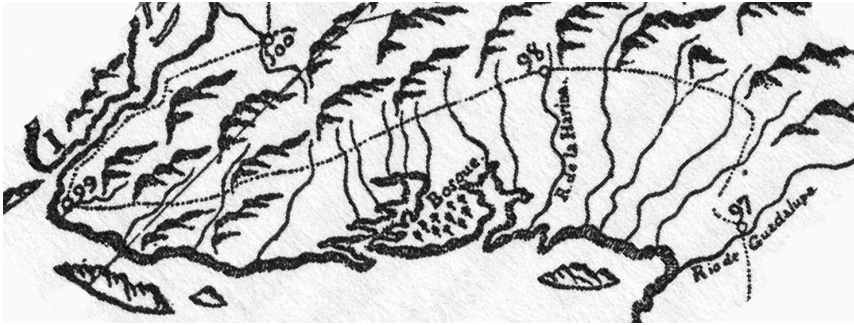
D. San Lorenzo Creek and Expedition Camp #98

José Soberanes, who came as a guide from Monterey, told father Font this creek was called Arroyo de la Harina after a load of flour that got wet during the prior journey of Pedro Fages. Anza writes, "Today in passing we have seen six villages, whose inhabitants, not accustomed to seeing us, fled like wild beasts. Notwithstanding this, about forty heathen have come close to us and I have given them presents. The last one whom we encountered discovered us about forty paces away, and although less than five steps from where he was there was a place where he might have hidden, such was his terror that he lay down in his tracks...I tried to relieve his fright and to get him to stand up, but for a long time I was unable to succeed...I thought it best to leave the unfortunate fellow alone." A small park and interpretive display is located at the corner of Foothill Boulevard and City Center Drive in Hayward commemorates this day, March 31, 1776.

E. Peralta Hacienda Historical Park

Luis María Peralta came to California with Anza when he was 16 years old. In 1820, the last Spanish governor gave him a 44,800-acre land grant. He named it *El Rancho de San Antonio* and divided it among his three sons. It encompassed today's cities of Hayward, Oakland and Berkeley. In 1842, Antonio Maria Peralta received what became the San Antonio division on which this *hacienda* sits. Peralta Creek is adjacent to the museum, and the park is open to the public. It is located in the Fruitvale district of Oakland at 2465 34th Avenue; 37° 47' 16" N, 122° 12' 55" W).

Learning On The Trail in Alameda County



Font's map (detail) showing the creeks and Alameda *Bosque* (Forest). Bolton

The San Carlos: The Golden Fleece

In 1775, *Viceroy* Bucareli sent three ships to explore the coast of California and to provide support for the second Anza Expedition. One of the ships was a 200 ton *paquebote* (packet boat) called the San Carlos, and was known by its sailors as the *El Toisón de Oro*. Its commander was Don Manuel de Ayala, and his ship was to be the first European sailing vessel to enter the San Francisco Bay. It left San Blas (in *Nayarit, Mexico*) for San Francisco in March of 1775, and entered the famous port, known then only by land, on August 5, 1775. The ship found safe anchorage within Hospital Cove on an island they named La Isla de Nuestra Señora de los Ángeles, a name somewhat preserved in its name today, Angel Island. Over the next few weeks, Ayala's pilot, Don José Cañizáres, carefully mapped the bay using a launch (long boat) and a *cayuco* (kayak/canoe), and found the local American Indians friendly. Leaving on September 18th, the San Carlos returned, via Monterey, to San Blas. On March 10, 1776, ironically the day that Anza arrived in Monterey, the San Carlos again left for San Francisco, this time under the command of Fernando Quirós, but with Cañizáres again as pilot. It had many of the supplies and property of Anza's colonists on board. It arrived in Monterey on June 3, and many of its crew were present at the founding ceremonies of the San Francisco *Presidio*, September 17. In a twist of fate and a foreshadowing of events that made San Francisco the destination of the later (1849) Gold Rush, *El Toisón de Oro*, the name of the ship that passed through the Golden Gate, translates to "the Golden Fleece." Both Cañizáres and Font mapped the area we know today as Alameda, known today for its international port.

Heard in Alameda County: Mosquitos and Au, Au

Font describes two sounds: One was the mosquitoes buzzing around his head as they headed north along the East Bay's coastline. The other was from natives they encountered near Alameda Creek, who raised an arm, extended their hand as a sign that the soldiers should stop, and yelled "Au, au, au, au, au..." with great rapidity, then halted and vigorously slapped their thighs.

Additional Resources

Don Edwards San Francisco Bay National Wildlife Refuge – P.O. Box 524, Newark, CA 94560; tel.: 510-792-0222, web: desfbay.fws.gov

Mission San José – 43300 Mission Blvd. at Washington Blvd., Fremont, CA 94539; tel.: 510-657-1979, web: missionsanjose.org

East Bay Regional Park District – P.O. Box 5381, Oakland, CA 94605-0381; tel.: 510-544-2611, web: ebparks.org

Coyote Hills Regional Park – 8000 Patterson Ranch Road, Fremont, CA 94555; web: ebparks.org/parks/coyote_hills

Alameda Creek Trail – 2250 Isherwood Way Fremont, CA 94536; web: ebparks.org/parks/trails/alameda_creek

Hayward Area Historical Society – 22701 Main Street, Hayward, CA 94541; tel.: 510-581-0223, web: haywardareahistory.org

San Francisco Bay Trail; tel.: 510-464-7900 web: <http://baytrail.abag.ca.gov>

Peralta Hacienda Historical Park – 2465 34th Avenue, Oakland, CA 94601; tel.: 510-532-9142, web: peraltahacienda.org